

# Burmatex®

MANUFACTURERS OF CREATIVE FLOORING 



## tivoli mist®



low carbon carpet tiles

carpet tiles of **tivoli mist®** polar drift, sunset canyon & hibiscus haven  
carpet tiles of **tivoli®** dominica dawn, madagascan orange & pink paradise

2 tivoli mist®

# tivoli mist®

## Level Loop Carpet Tiles & Planks Made in the UK

tivoli mist® uses **EgoBalance®** 100% **recycled bio-genic** yarn, which is made using **bio-genic** organic waste from **renewable** sources. Combined with our unique **BioBase® recycled** backing, **tivoli mist®** is **low carbon**.

With a design allowing for soft transitions between colours or a sleek allover pattern that mists from one to another.

The colour palette of 10 provides endless possibilities for adding colour into a wide variety of interiors.

---

## eco<sub>2</sub>matters®

We are committed to achieving Net Zero through the continual removal of carbon from our products and processes. We believe that what we do matters, that the ecology of our planet matters, and that **eco<sub>2</sub>matters®**

To find out more visit [www.burmatex.co.uk/eco2matters/](http://www.burmatex.co.uk/eco2matters/)



carpet tiles of **tivoli mist®** polar drift & shoreline sail  
carpet tiles of **tivoli®** hudson bay



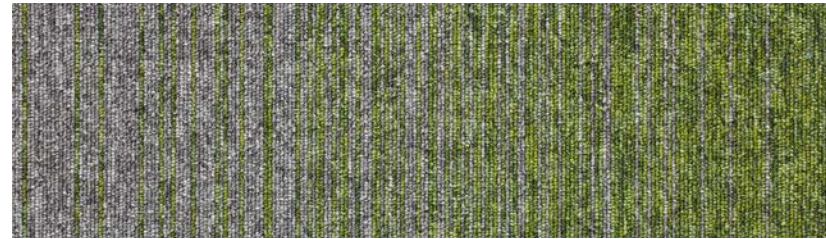
# colour palette

tivoli mist® has 10 colour options



bora bora

LRV: Y 14.24



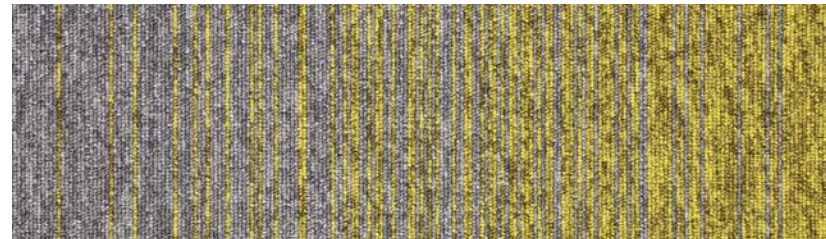
turtle bay

LRV: Y 10.17



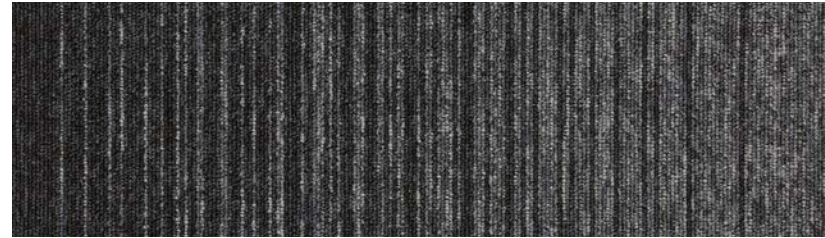
polar drift

LRV: Y 9.99



south beach

LRV: Y 14.27



galapagos bay

LRV: Y 5.75



sunset canyon

LRV: Y 13.25



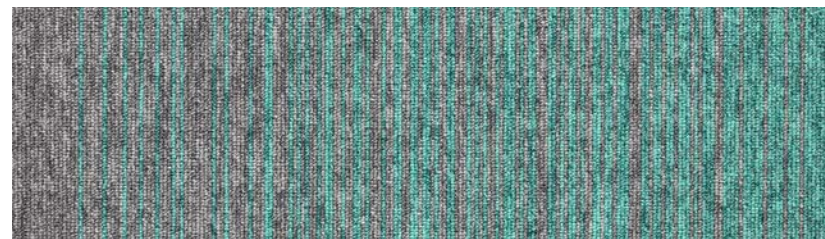
shoreline sail

LRV: Y 5.93



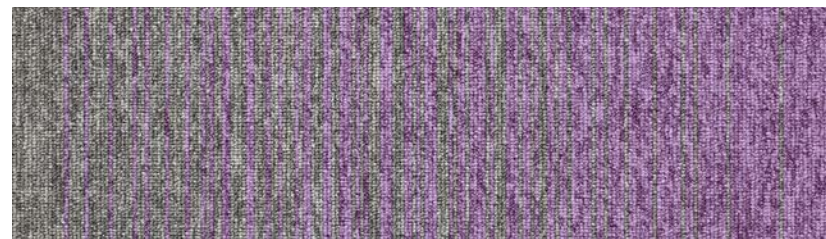
hibiscus haven

LRV: Y 12.93



waterfront wave

LRV: Y 15.95



island haze

LRV: Y 14.10



carpet tiles of **tivoli mist**® polar drift, turtle bay, south beach, madagascan orange, hibiscus haven & island haze

8 tivoli mist®



carpet tiles of **tivoli mist®** turtle bay, dominica dawn & guyana moss



carpet tiles of **tivoli mist®** polar drift & sunset canyon  
carpet tiles of **tivoli®** madagascar orange & aruba dusk



carpet planks of **tivoli mist®** polar drift, waterfront wave  
carpet planks of **tivoli®** aruba dusk, miami aqua  
& dominica dawn

## eco<sub>2</sub>matters®

Carbon Status:

 low carbon

Yarn Description:

 100% recycled  
bio-genic

Backing:

 **BioBase®**  
\* Recycled content BS EN ISO 14021

Global Warming Potential / kg CO<sub>2</sub> eq:

 independently  
3rd party verified **3.10**

## tivoli mist®

Total Recycled Content of Product:

**74.0%**  
BS EN ISO 14021

Installation Waste:

**3-4%**  
\* Based on average installation

Wear Classification:

**Class 33**  
heavy commercial use (BS EN 1307)

Sound Absorption Coefficient:

**Class E .02**  
BS EN 354:2003

Warranty:

**15 years**

Enhanced Modular Option:

 Tiles  
 Planks

Castor Chair Rating:

**Pass** - continuous use  
(BS EN 985)

Impact Sound Insulation:

**23dB**  
BS EN ISO 10140-3:2010

## Environmental Product Declarations



Independent product specific  
EPD of full life cycle A1 - D



EPDs and independent third party verification are an integral part of our sustainability principles.

## Low Carbon BioBase® backing



Recycled Content

77%

\*minimum content

**BioBase®** is our low carbon backing system, made using locally sourced recycled organic materials. Combined with 100% organic, non-vinyl polymer binders and fillers.

## Take Back Service



Total Landfill Waste

0%

Working with our partners, we work to find your used carpet tiles a new home, such as helping local community organisations requiring low cost flooring.



carpet tiles of **tivoli mist®** polar drift, shoreline sail, galapagos bay & carpet tiles of **tivoli®** hudson bay

# tivoli®

## Mix and match the **low carbon tivoli mist®** and **tivoli mist®** ranges

This flexible **tivoli mist®** design offers the opportunity to create soft transitions between different colours within the **tivoli®** palette. With a coordinated colour palette of 40, **tivoli®** is suitable for use in a wide variety of commercial interiors.

**tivoli®** uses **EgoBalance®** 100% **recycled bio-genic** yarn, which is made using **bio-genic** organic waste from **renewable** sources. Combined with our unique **BioBase® recycled** backing, **tivoli®** is **low carbon**.

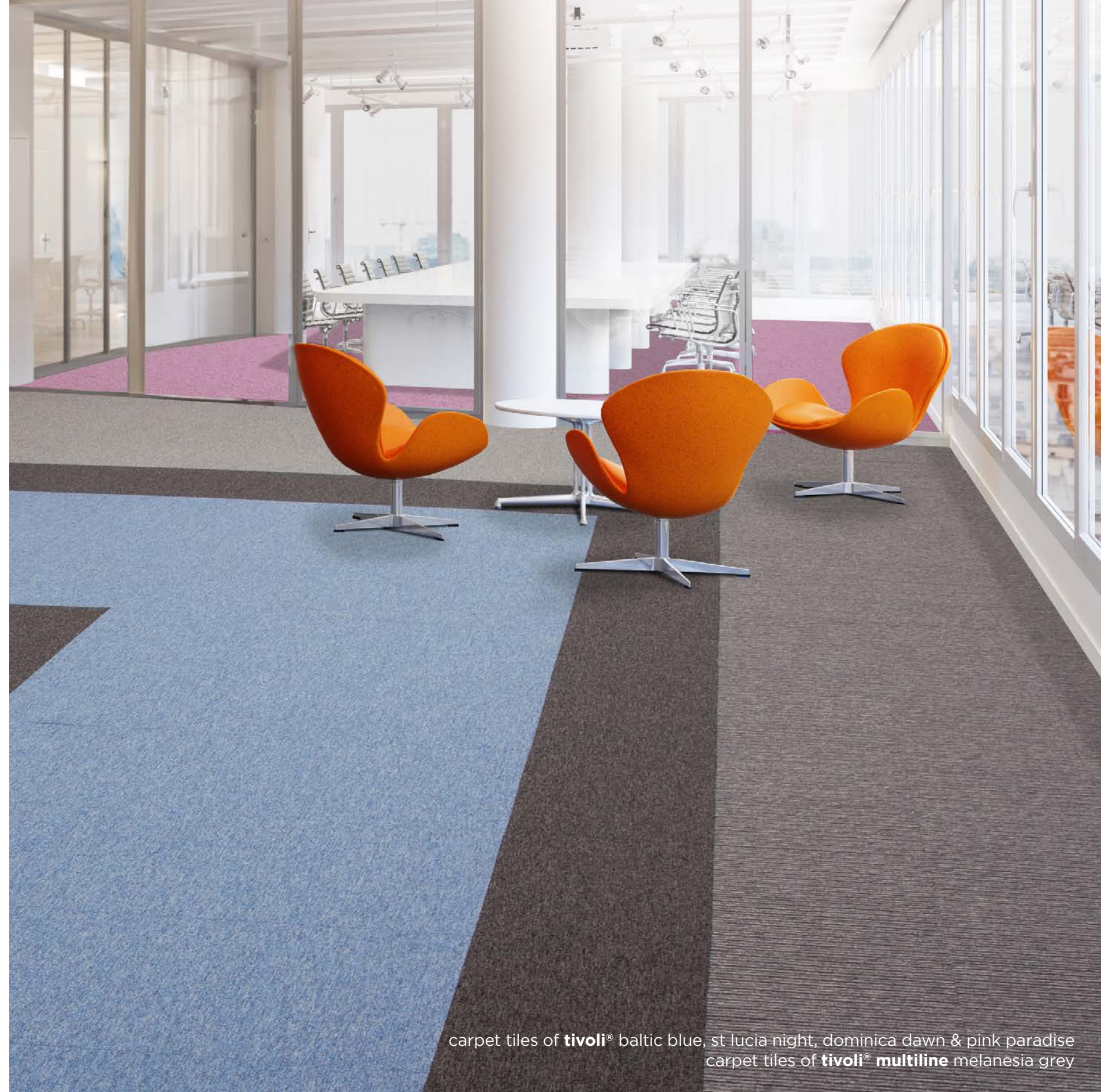
Comprised of **tivoli®** and **tivoli® multiline** the options for floor design are endless.

With a coordinated colour palette of 40 and Class 33, this enduring collection is suitable for use in a wide variety of commercial interiors.

### tivoli® 32 options

									
dominica dawn ■ 20245 ■ 21145	antigua steel ■ 20242 ■ 21142	belize greige ■ 20208 ■ 21108	serranilla stone 20213	st lucia night ■ 20207 ■ 21107	aruba dusk ■ 20275 ■ 21175	st kitts basalt ■ 20260 ■ 21160	montserrat black 20259	tenerife black ■ 20707 ■ 21207	melanesia grey ■ 20703 ■ 21203
									
kythira blue 20265	barbados blue ■ 20220 ■ 21120	naxos breeze 20263	baltic blue 20281	nassau skies 20252	crete blue 20262	hudson bay ■ 20285 ■ 21185	key west blue ■ 20253 ■ 21153	mediterranean topaz ■ 20709 ■ 21209	great barrier blue ■ 20717 ■ 21217
									
greenland fern 20282	guyana moss ■ 20201 ■ 21101	tiki yellow ■ 20266 ■ 21166	miami aqua ■ 20267 ■ 21167	sri lanka sands ■ 20268 ■ 21168	bengal base 20283	tasmanian rock 20284	tobago sands 20246	seychelles beige ■ 20711 ■ 21211	palm green 20715
									
tropic purple ■ 20276 ■ 21176	pink paradise ■ 20277 ■ 21177	puerto rico purple 20254	pinta purple 20270	capetown clay 20278	madagascan orange ■ 20279 ■ 21179	cuban brown 20280	rio red 20273	volcanic flame 20716	hawaiian purple 20714

### tivoli® multiline 8 options



carpet tiles of **tivoli®** baltic blue, st lucia night, dominica dawn & pink paradise  
carpet tiles of **tivoli® multiline** melanesia grey

# Adhesive Free Installation to Facilitate Flooring Reuse

## Burmatex® achieves circular installation with IOBAC

Adhesive free installation with IOBAC allows carpet tiles to be held securely in place, yet are uplifted cleanly and damage-free, enabling easier reuse and recycling.

Scan QR code for the Burmatex® Installation Guide



Magnetic and dry-tack



### IOBAC MagTabs®

Magnetic on one side and dry-tack on the other, IOBAC MagTabs work by locking carpet tiles tightly together using a unique 2-dimensional grip onto magnetically receptive sub-floors such as access flooring.



Double-sided adhesive



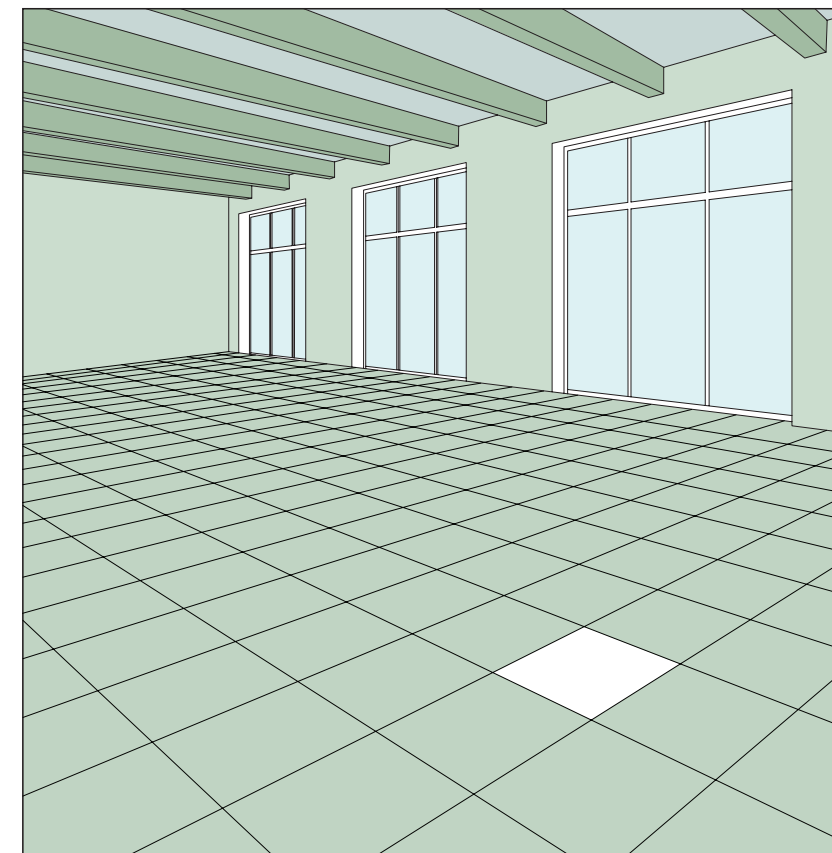
### IOBAC Tab-It®

Double-sided dry-tack adhesive tabs for cleanly fixing and uplifting carpet tiles on most prepared sub-floors.

# Design for Deconstruction

## To enable future reuse, repurposing, or recycling

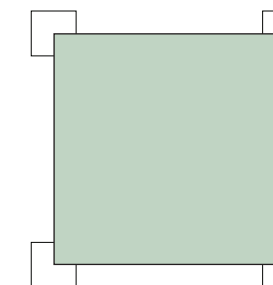
The Construction industry is currently in transition from a linear path to a circular economy, but this process is still at an early stage. Design Deconstruction plays a vital role in a buildings' circularity and a considered approach in selective dismantlement of building components for provision of its future reuse, repurposing or indeed recycling, is imperative in this change.



### Supportive measures:

- Products supported by specific, full LCA EPD's
- Products with low GWP
- Products that are Carbon Neutral\*
- Products with high recycled content ISO 14021
- Products with recyclable components
- Products compatible with reuse and circular installation

The different colours show different building materials that can be deconstructed and treated separately.



IOBAC MagTabs® and Tab-It® enable carpet tiles to be uplifted cleanly and damage-free, enabling easier reuse and recycling.

# technical specification

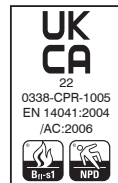
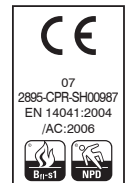
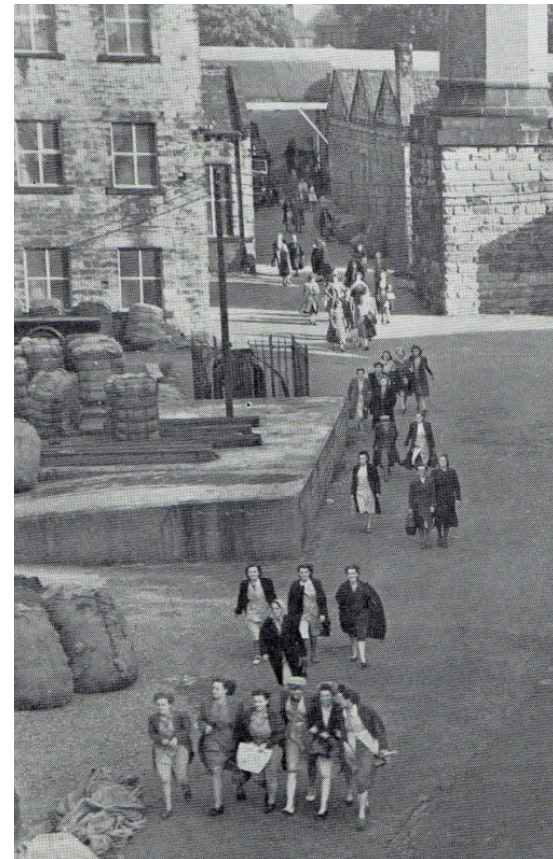
<b>Yarn</b>	100% <b>recycled bio-genic</b> solution dyed nylon
<b>Tile / plank dimensions</b>	50cm x 50cm / 25cm x 100cm
<b>Pile Weight</b>	600g/m <sup>2</sup>
<b>Total Weight</b>	4050g/m <sup>2</sup>
<b>Total Thickness</b>	6.5mm
<b>Backing</b>	<b>BioBase® recycled</b> backing (recycled BS EN ISO 14021)
<b>Wear Classification</b>	Class 33 heavy commercial use (BS EN 1307)
<b>Castor Chair Rating</b>	Pass - continuous use (BS EN 985)
<b>Flammability</b>	Euroclass Bfl-s1
<b>Static Loading</b>	BS 4939: 1987 (2003) Recovery >80% (24hrs)
<b>Reduction in Impact Noise</b>	BS EN ISO 10140-3:2010 23dB
<b>Warranty</b>	15 years
<b>Tiles / planks per Box</b>	20 (5m <sup>2</sup> ) / 18 (5m <sup>2</sup> )

# Burmatex®

MANUFACTURERS OF CREATIVE FLOORING 



**Burmatex®**, created in 1967, is one of the UK's leading designers and manufacturers of contract carpet tiles. Our eco friendly portfolio focuses on the design and creation of innovative products to meet the needs of architects, specifiers and contractors. Get in touch to discuss our design service for your project.



FM 01440 EMS 784147

# Burmatex®

MANUFACTURERS OF CREATIVE FLOORING 

eco<sub>2</sub>matters®

## Head Office

Victoria Mills, The Green  
Ossett  
West Yorkshire  
WF5 0AN  
United Kingdom

Tel: +44 (0) 1924 262525  
Email: [projects@burmatex.co.uk](mailto:projects@burmatex.co.uk)

**[www.burmatex.co.uk](http://www.burmatex.co.uk)**

Issue: January 2026